

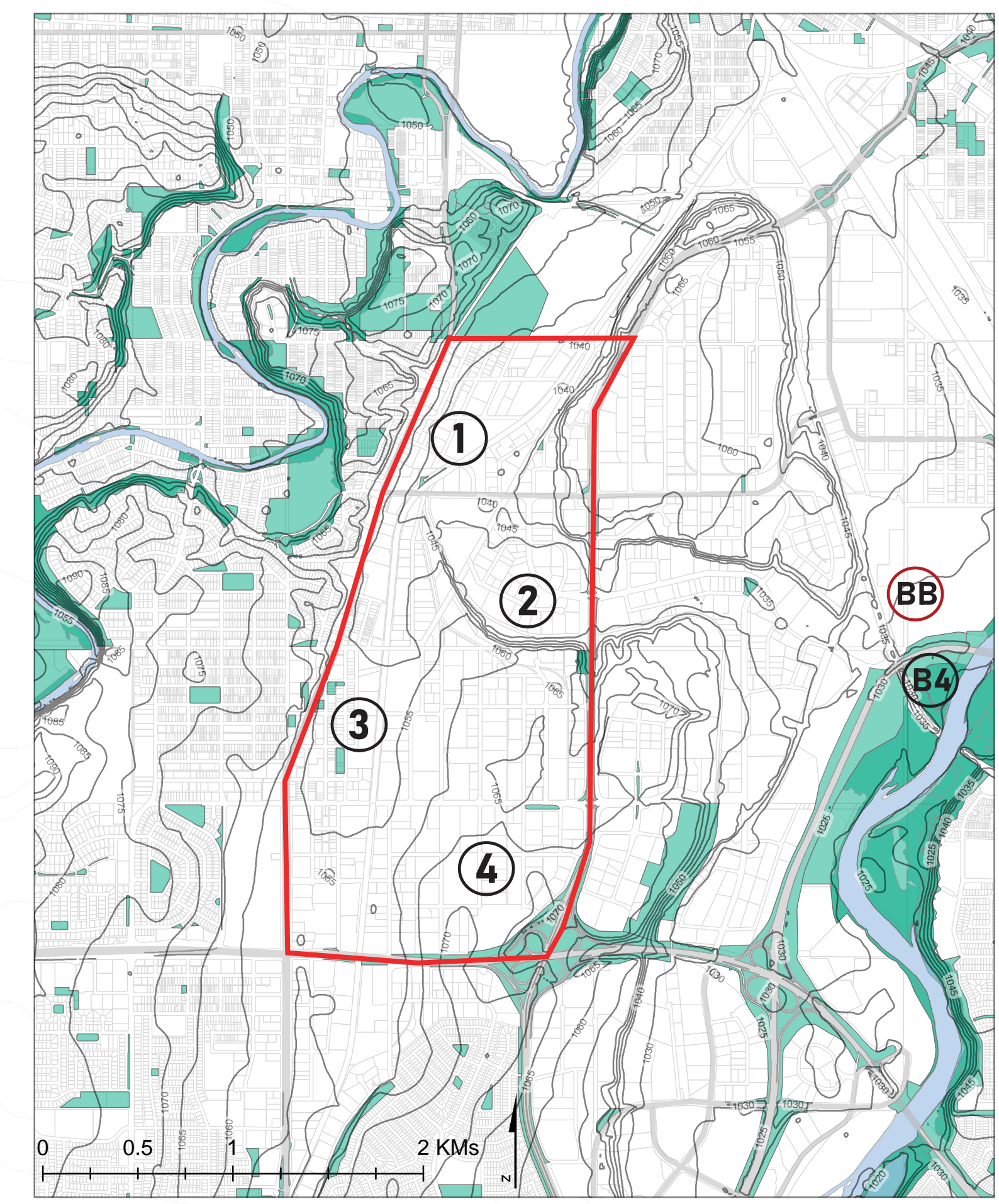
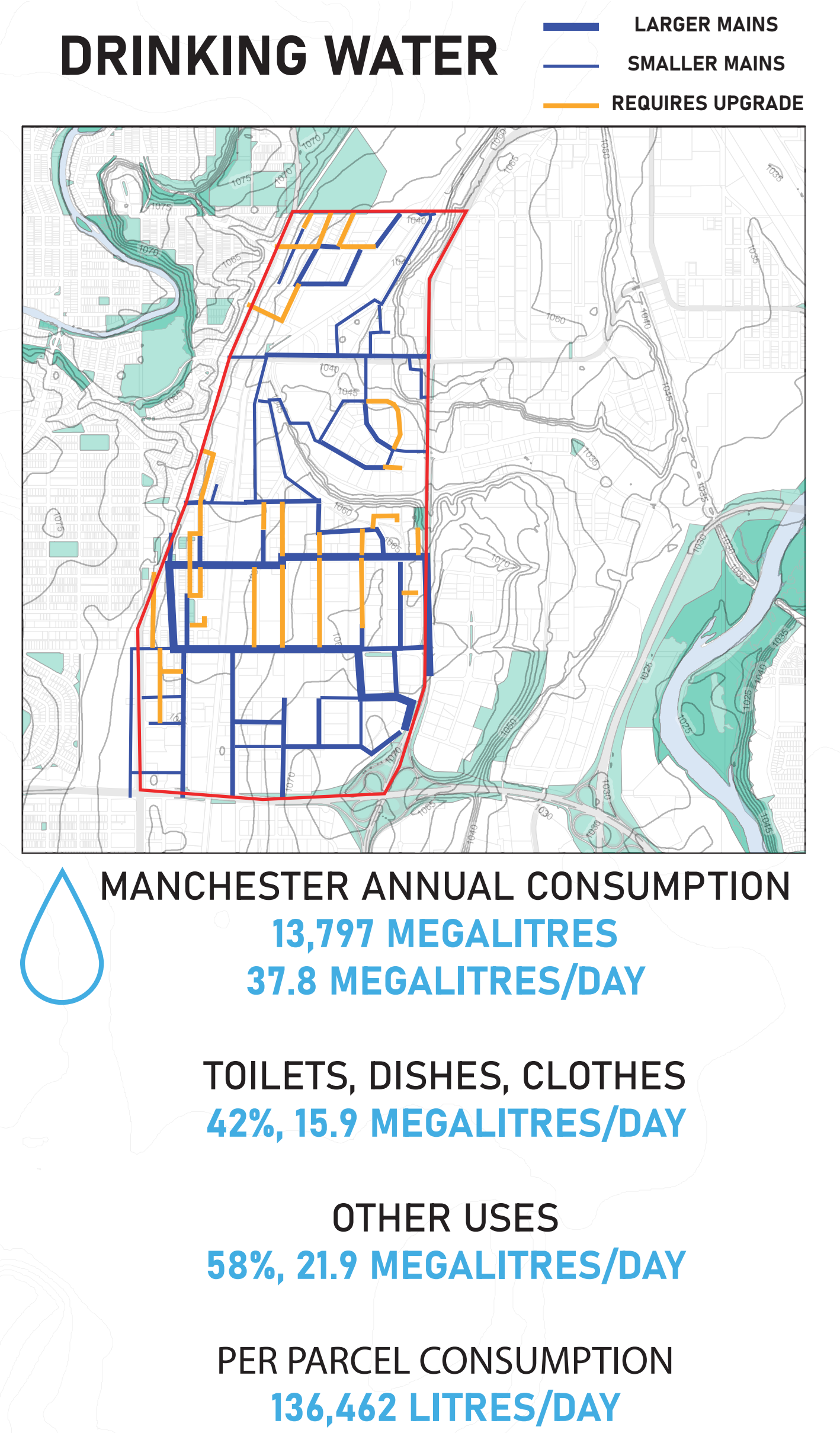
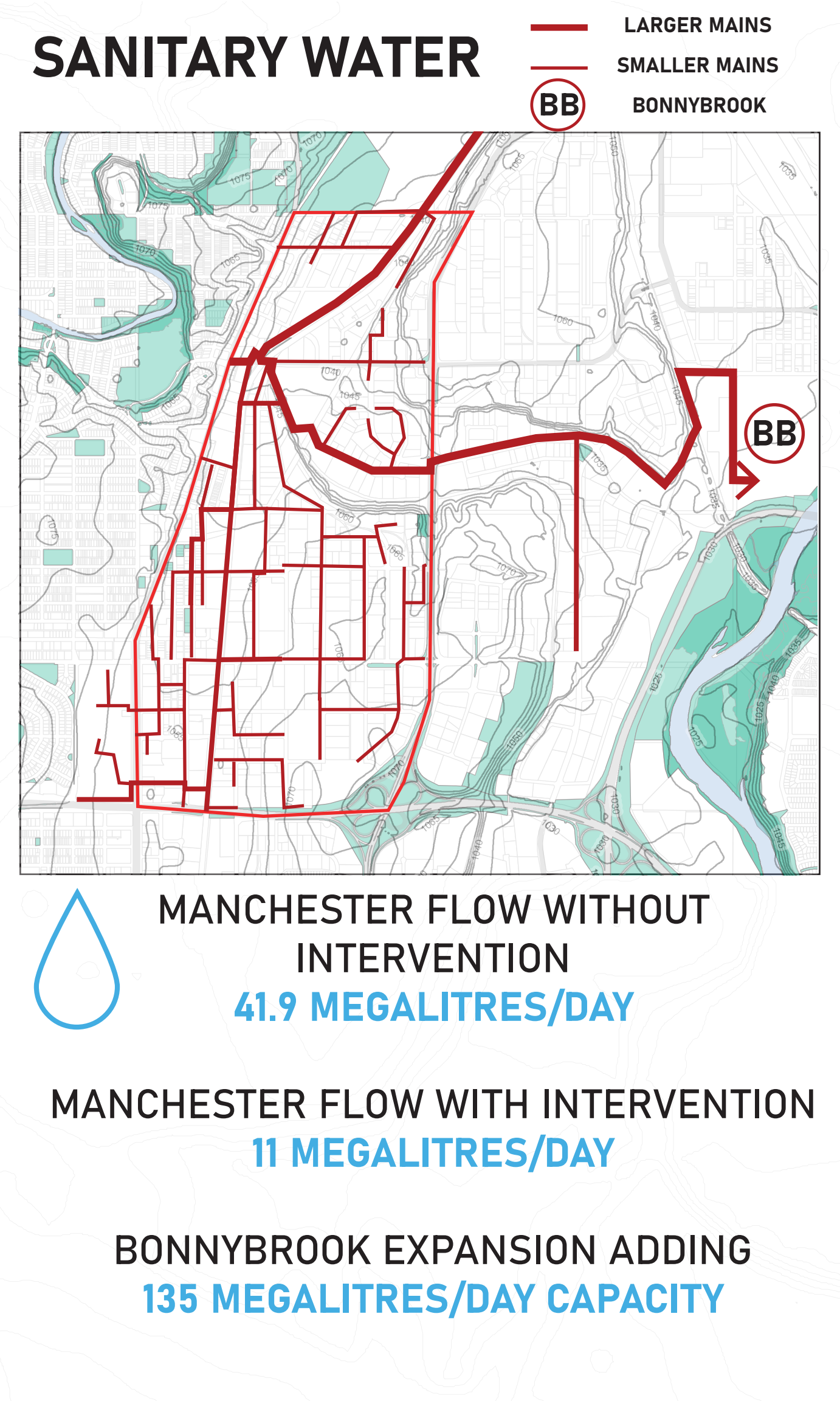
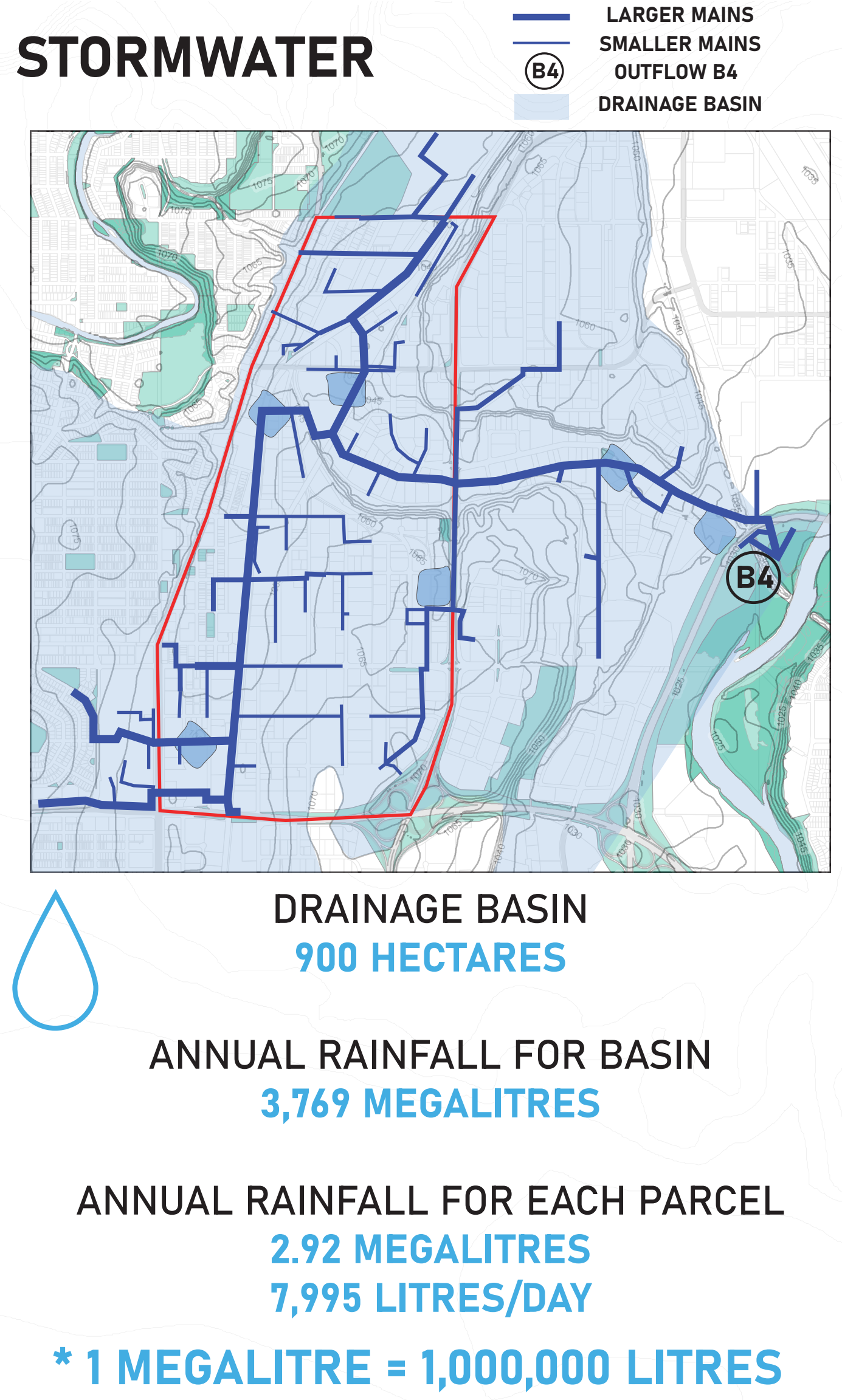
# MANCHESTER'S WATER 2060: A RENEWABLE RESOURCE

EVDS 616 | ADAM ROBERTS | W2020

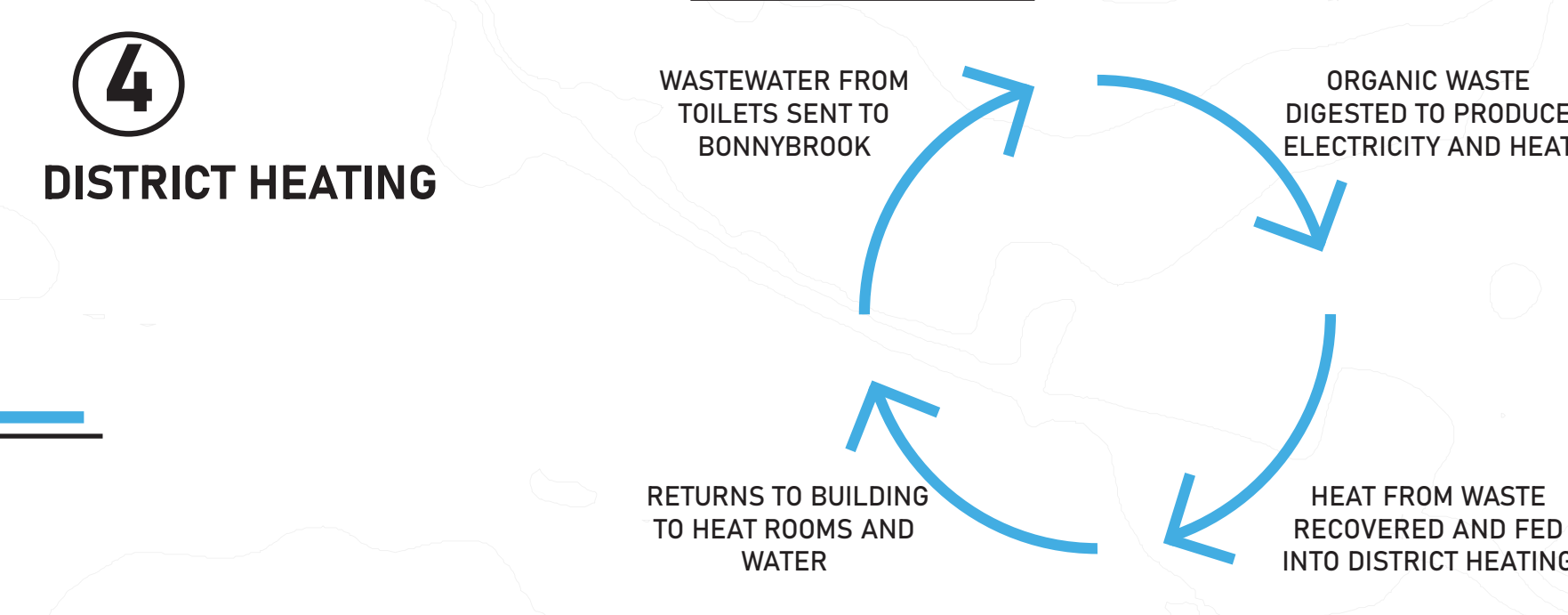
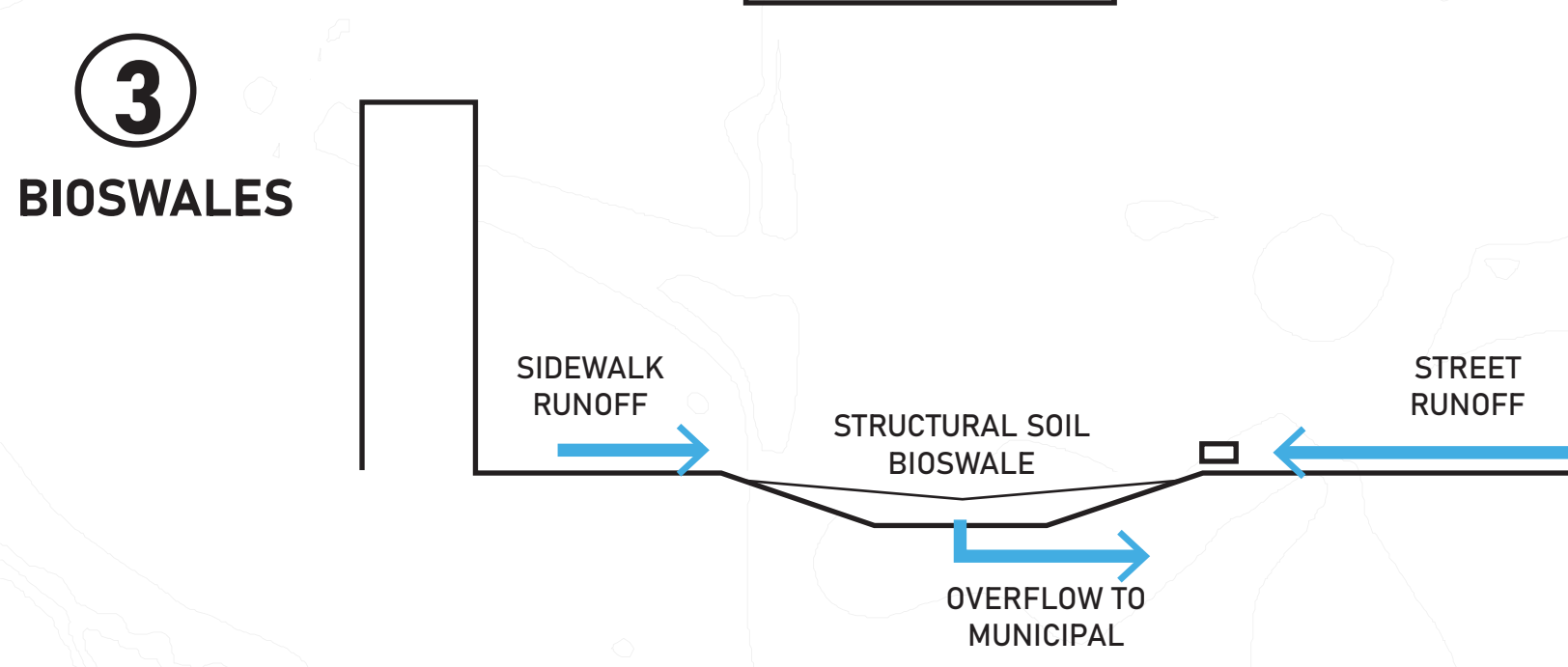
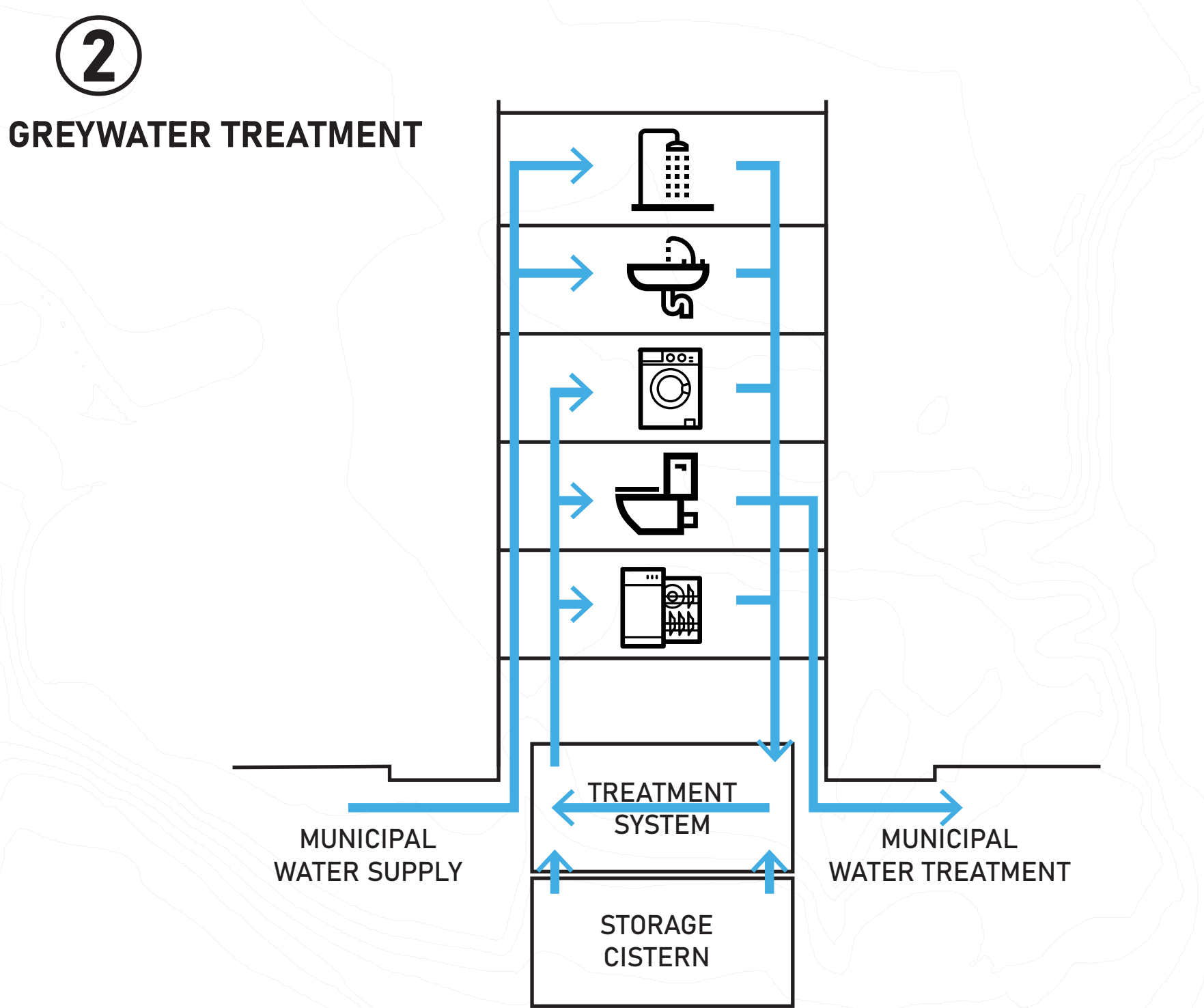
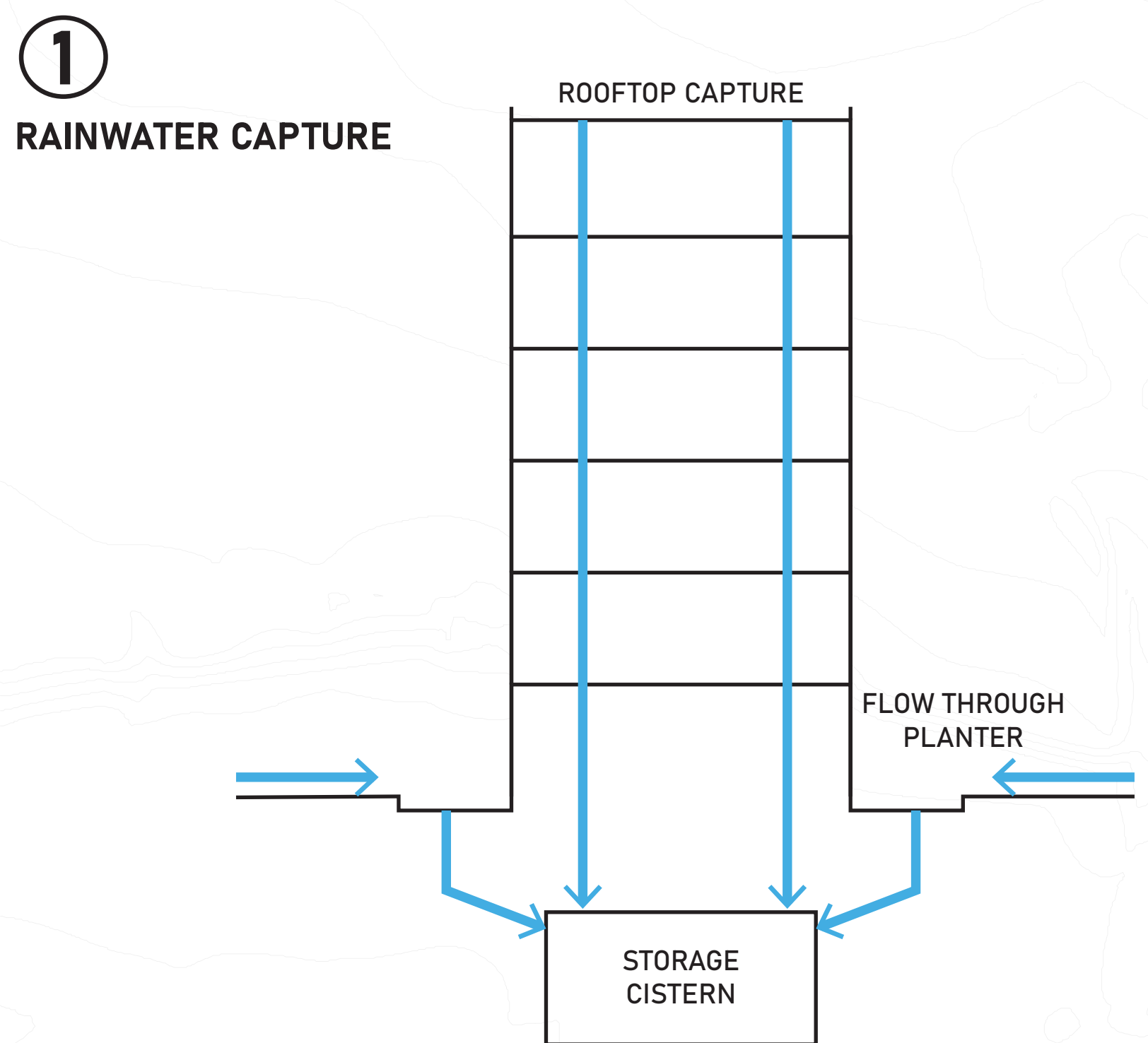
## POINTS OF CONTACT

- FOOD**  
WATER WILL BE SUPPLIED TO IRRIGATE GARDENS
- ENERGY**  
DISTRICT HEATING AT BONNYBROOK WILL HARNESS ORGANIC WASTE AND HEAT ENERGY
- TRANSPORTATION**  
STREET SECTIONS WILL INCLUDE BIOSWALES IN BOULEVARD
- SOLID WASTE**  
ART PARKS WILL BE INTEGRATED WITH STORMWATER PONDS

100,000 RESIDENTS
193 HECTARES
277 PARCELS
1106 BUILDINGS
1.35 FAR
30% COVERAGE



## NET ZERO INTERVENTIONS



## PRECEDENTS

