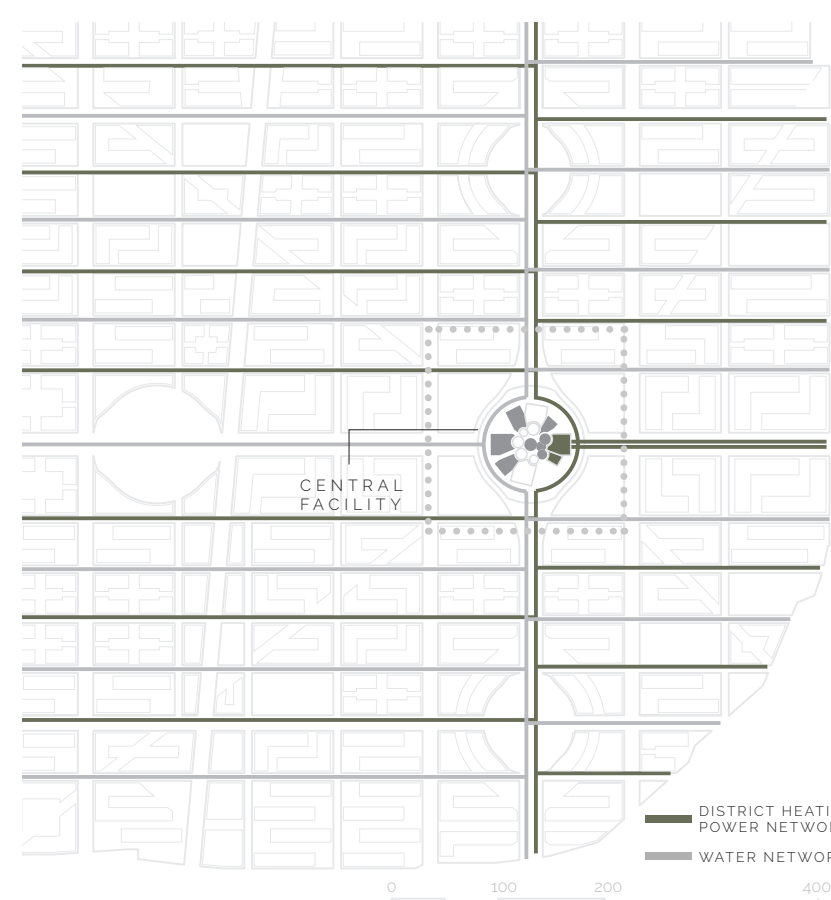


MANCHESTER

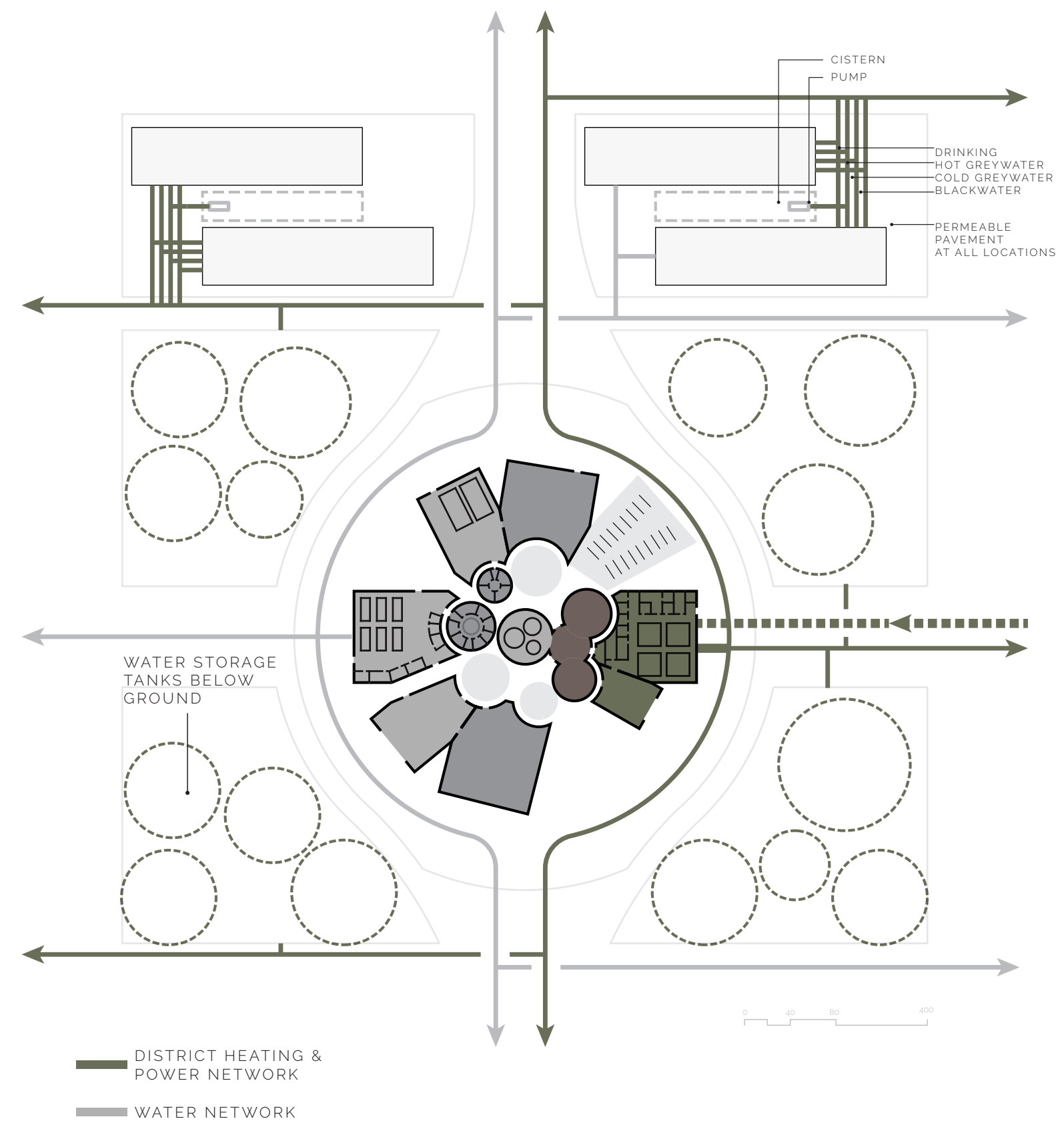
FATIMA PANAMA, JUNE CALUZA, JUAN PALACIOS, TITUS LEE



DISTRICT HEATING & POWER + WATER NETWORK

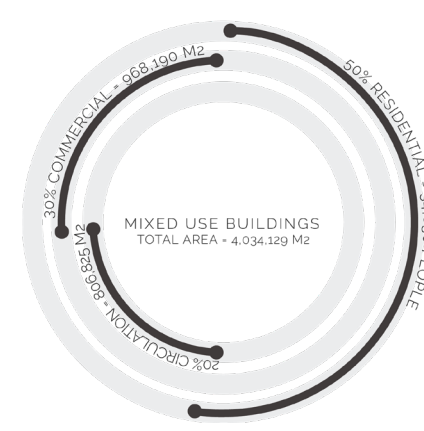
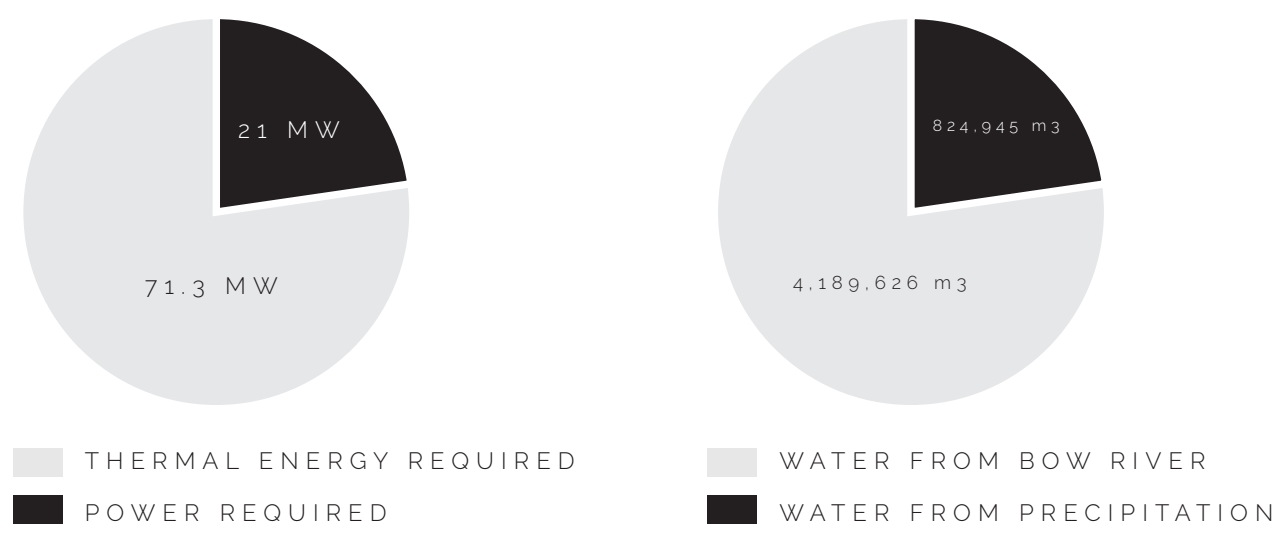


CIRCULATION NETWORK



CENTRAL FACILITY FLOOR PLAN

The new Manchester district model aims to create a nexus of infrastructure networks, including: energy, water, and transportation systems. Water and energy systems will be linked by allowing wastewater residues to be transformed into fuel, which will in turn produce heat and electricity for the district. The electricity produced from the central facility will be used to power an intricate network of public transportation that will ensure the entire district is well connected within itself and the rest of the city. The public transportation network will be supported by public bicycles and a large pedestrian network that will make it easy for residents and visitors to walk everywhere. The new urban design for the district will be based on a mix of uses that will include: residential, commercial, light industrial and institutional uses. This high density, mixed-use model will revitalize the streets of the district, drawing many visitors to the area. By creating vibrant mix of uses the district will be able to provide a diversity of residences for over 50,000 people, while also providing over 20,000 jobs within a variety of sectors. The district will also offer a extensive range of entertainment options. These factors combined will attract a wide variety of demographics to the district which will result in a revitalization of that area of the city as a whole.

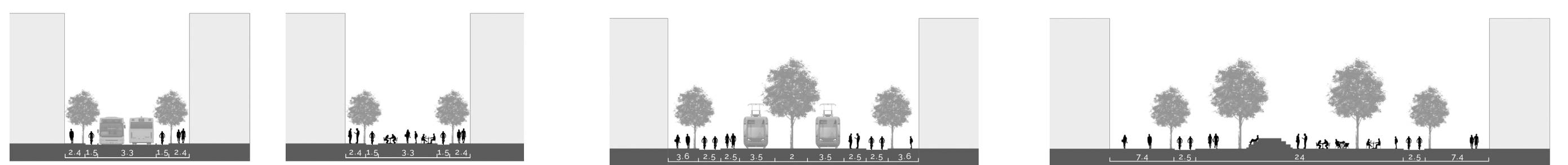


MIXED USE BUILDINGS
TOTAL AREA - 4,534,329 M²

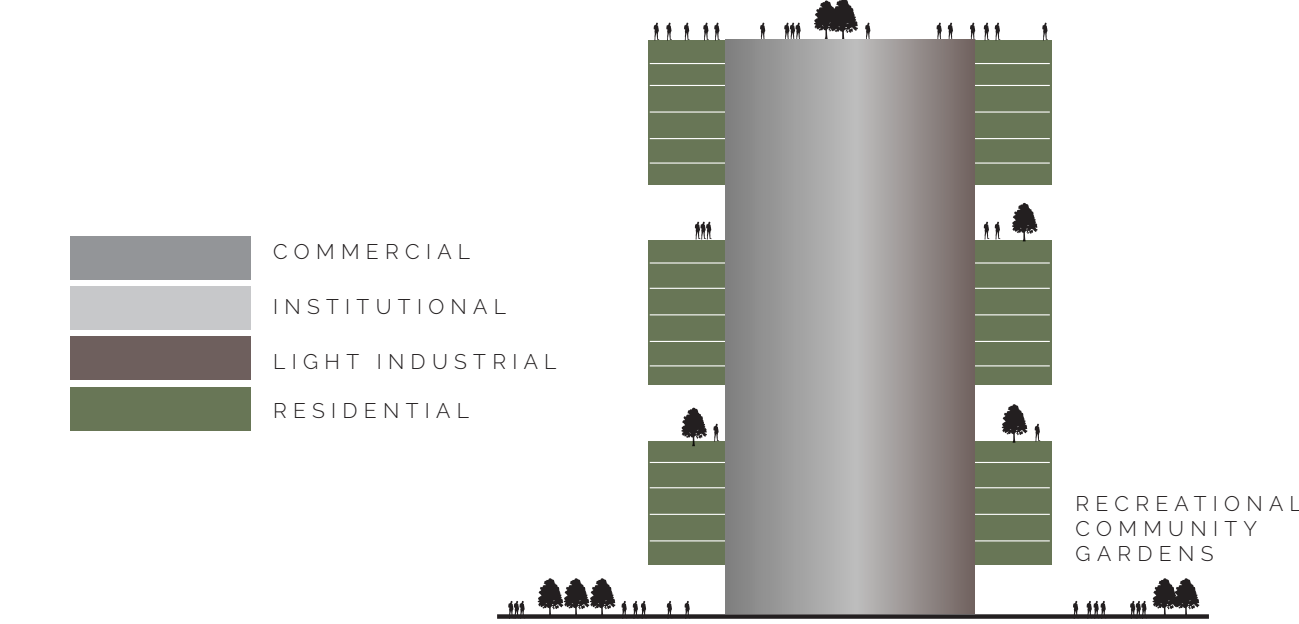


JOB BREAKDOWN
AREA - 988,199 M²
NET AREA - 972,733 M²

10% OFFICE AREA PER PERSON - 67.773M ² / 12 M ² OFFICE JOBS - 5,647	15% RETAIL AREA PER PERSON - 101.000M ² / 19 M ² RETAIL JOBS - 5,350
10% CULTURAL AREA PER PERSON - 67.773M ² / 30 M ² CULTURAL JOBS - 3,882	15% ENTERTAINMENT AREA PER PERSON - 101.000M ² / 70 M ² ENTERTAINMENT JOBS - 1,462
10% SUPERSTORES AREA PER PERSON - 67.773M ² / 90M ² SUPERSTORE JOBS - 753	25% LIGHT INDUSTRIAL AREA PER PERSON - 101.000M ² / 47M ² LIGHT INDUSTRIAL JOBS - 3,664
15% FOOD INDUSTRY AREA PER PERSON - 101.000M ² / 19 M ² FOOD INDUSTRY JOBS - 5,647	



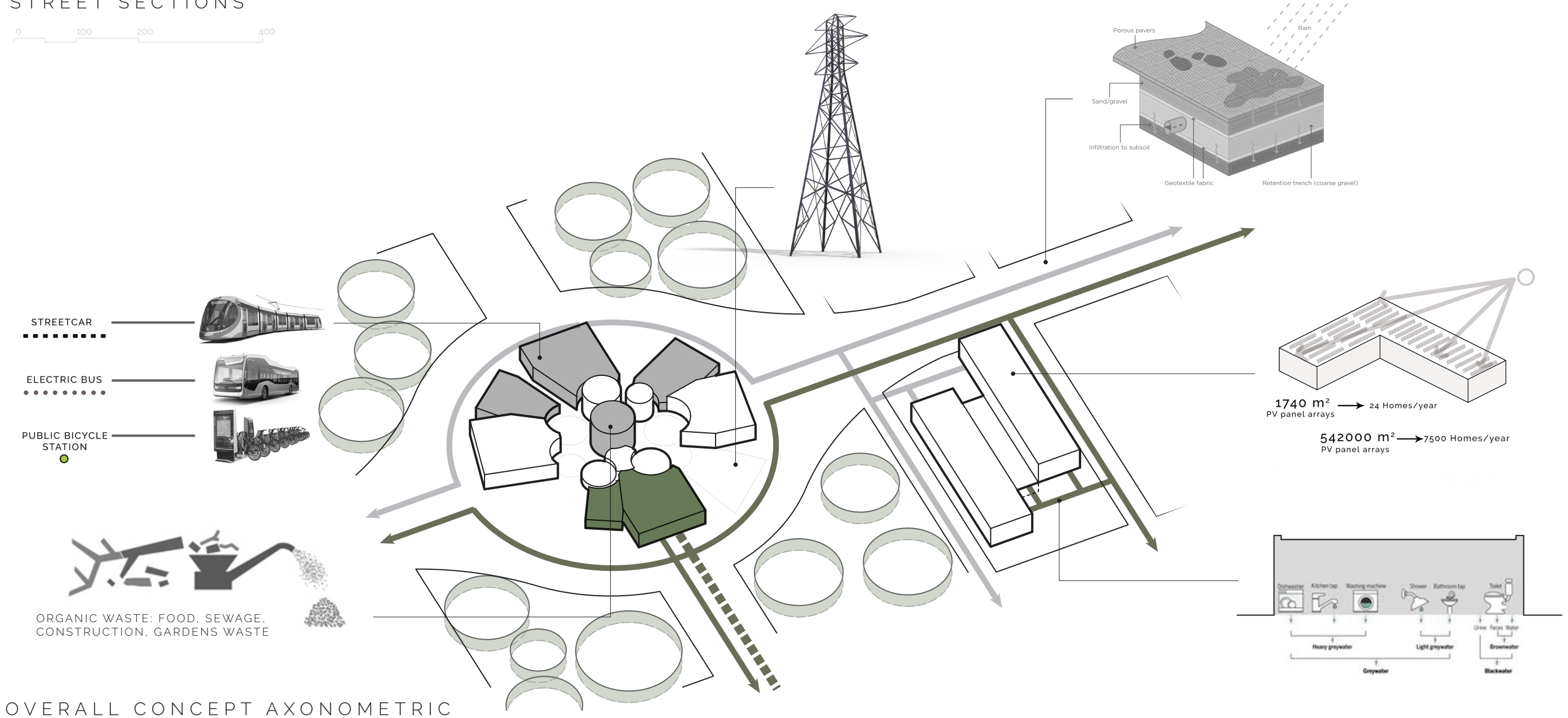
STREET SECTIONS



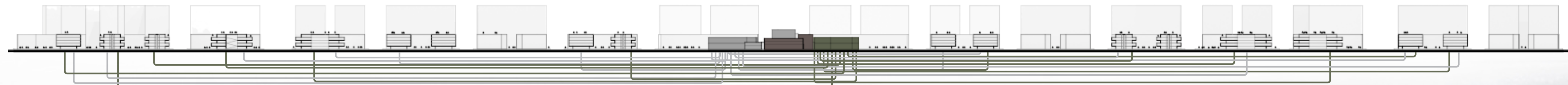
COMMERCIAL
INSTITUTIONAL
LIGHT INDUSTRIAL
RESIDENTIAL

RECREATIONAL
COMMUNITY
GARDENS

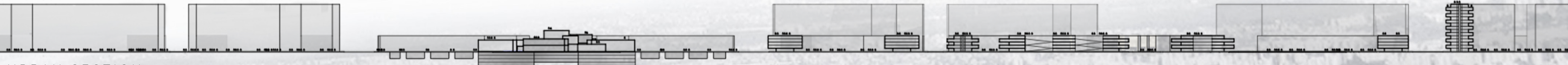
BUILDING PROGRAM STRUCTURE



OVERALL CONCEPT AXONOMETRIC



OVERALL CONCEPT SECTION



URBAN SECTION



SOLAR THERMAL

CAR FREE MOBILITY

CHP PLANT + WATER TREATMENT FACILITY

COMMUNITY GARDENS