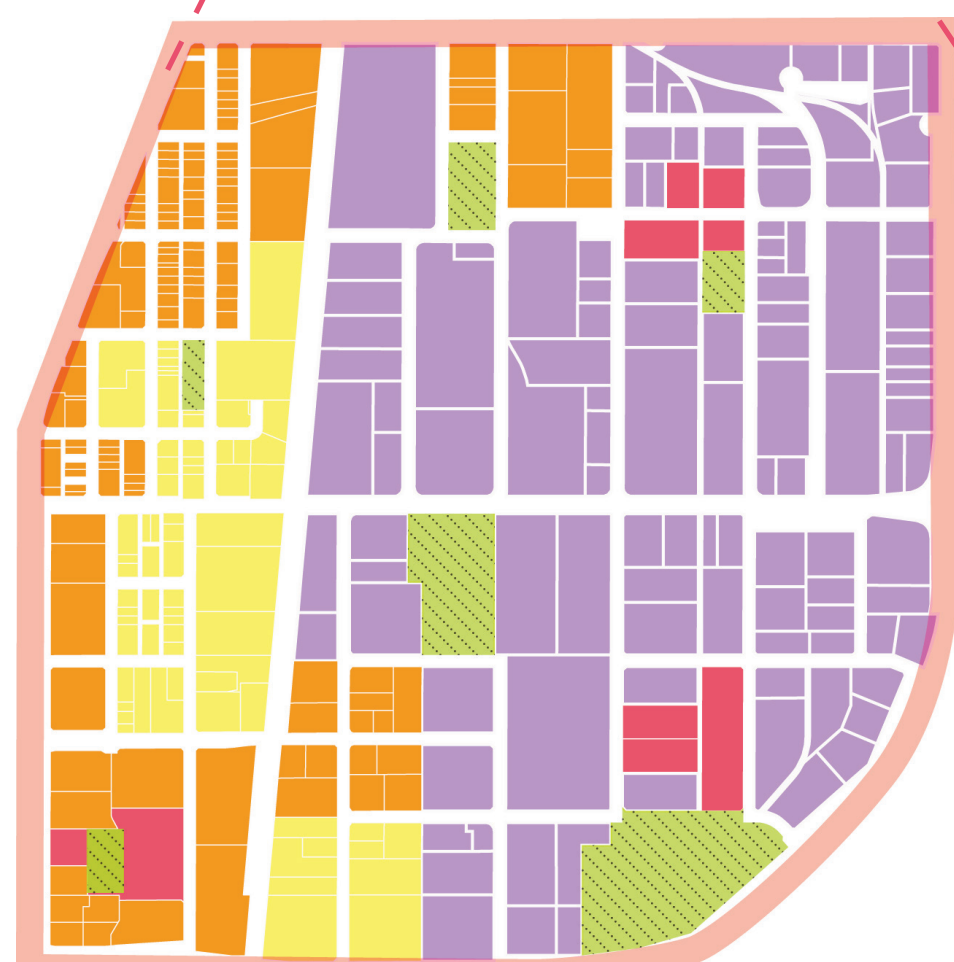
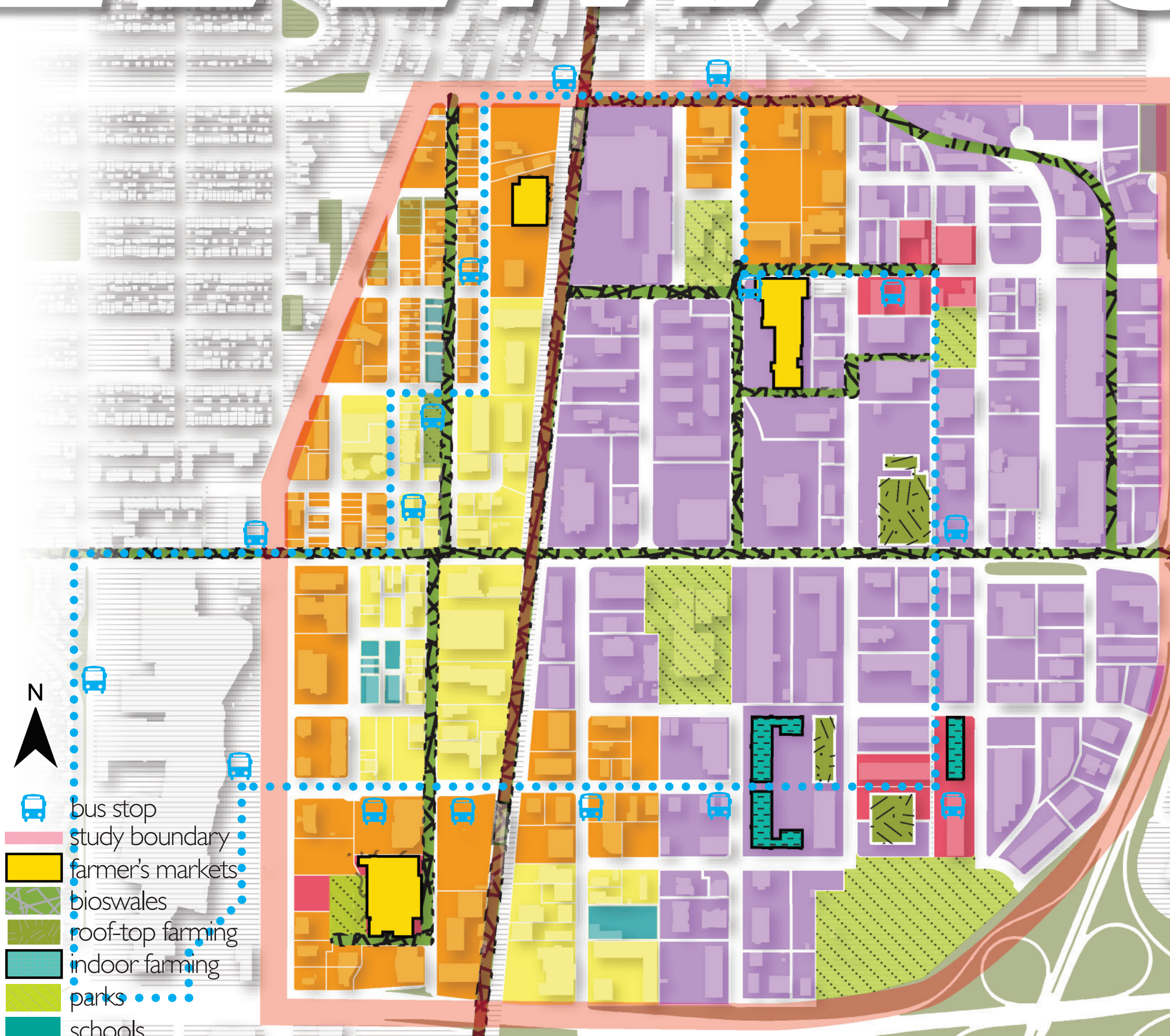


NEW MANCHESTER



NEW LAND USE PLAN

- commercial
- residential
- mixed-use
- industrial
- parks

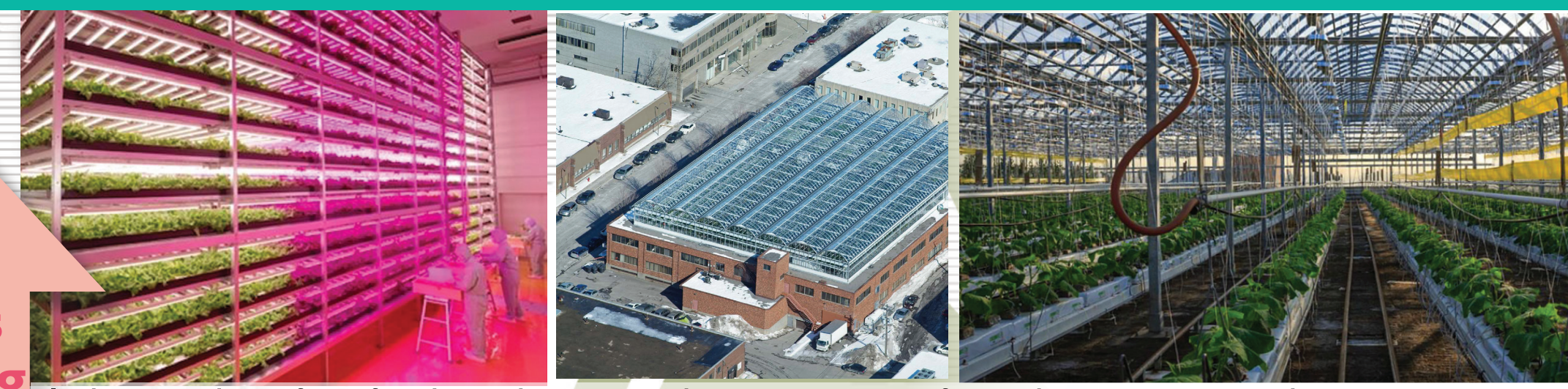


- bus stop
- study boundary
- farmer's markets
- bioswales
- roof-top farming
- indoor farming
- parks
- schools

INDOOR & ROOFTOP FOOD PRODUCTION

16,800
New Jobs

25
hectares
of farming



Indoor and rooftop food production is the conversion of warehouses to greenhouses. Precedents: Lufa Farms (Montreal) and indoor farming (Japan).

FARMER'S MARKETS

5kg
food can be
produced/
week

Food for
63,000
customers



25 hectares produces 5kg of vegetables per person weekly for 63,000 residents, and employs 2700 people.

WATER INFRASTRUCTURE

80%
waste
water
is reused

95%
greywater
is recycled



3,000,000 L/day of reused greywater after basic treatment using the Membrane Bioreactor which is used in the U.S. (Florida).

WASTE TO ENERGY

40%
energy
from
Solar
Panels

60%
Energy
from
Solid
Wastes



40% (93 MW) of Manchester covered in solar panels. The remaining 33 MW generated by incinerator plant estimated to cost \$300 million.

